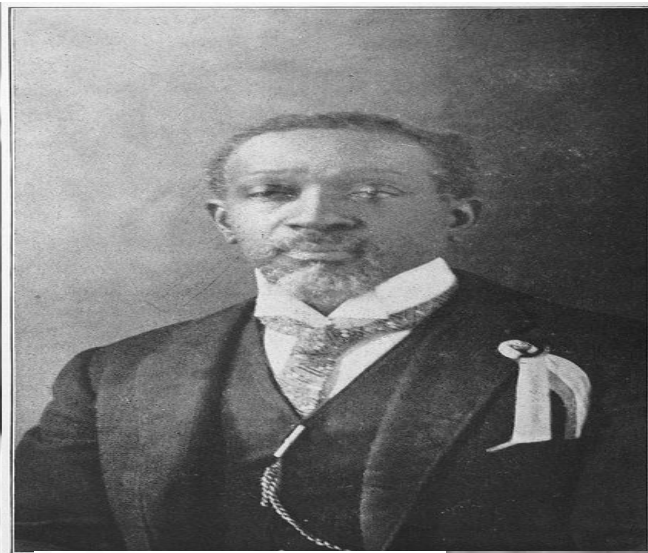
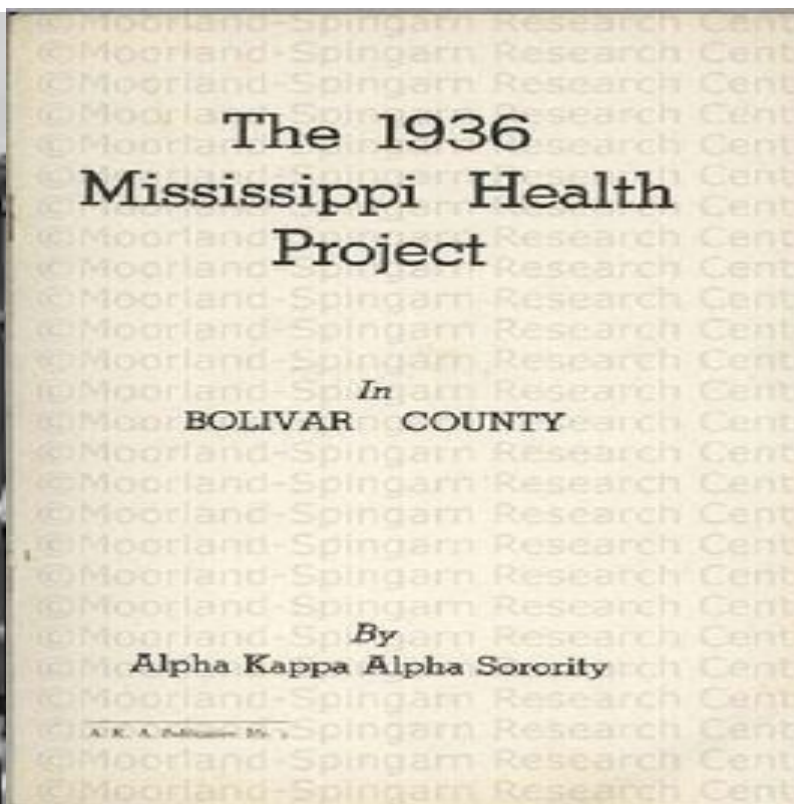


WE ARE RISING: MISSISSIPPI DELTA RESEARCH PROJECT



WE ARE RISING: MISSISSIPPI DELTA RESEARCH PROJECT

- OBJECTIVE: SWBAT create a PowerPoint/Google Slides presentation about a significant person, organization or event centered around the Mississippi Delta by utilizing multiple primary documents in order to teach the class about various aspects of the African American narrative in line with the theme, “We Are Rising”.



WE ARE RISING: MISSISSIPPI DELTA RESEARCH PROJECT

- ESSENTIAL QUESTIONS:
- 1. How have African Americans challenged societal norms in their plight for equality and justice?
- 2. Describe how cultural forces resulted in conflict and cooperation in the struggle for equality?
- 3. Explain the significance of young people in the struggle for equality and describe how they helped to shape the historical narrative?



WE ARE RISING: MISSISSIPPI DELTA RESEARCH PROJECT

- **ORDER OF SLIDES**
- Slide 1-Title Slide (Image/Date/Place of Birth/Date of Death)-Famous Quote (10}
- Slide 2-10 Significant Events/5 Images (20)
- Slide 3-(Continued)
- Slide 4-Introduction/Analysis of Document 1 (20)
- Slide 5-Introduction/Analysis of Document 2 (20)
- Slide 6-Introduction/Analysis of Document 3 (20)
- Slide 8-Reflection on your research. Your opinion on the impact of person/event/organization. (10)
- 1 Question for the class (10)
- Slide 9-Bibliography (10)

The total point value for this project is 120 pts. Late Submission of assignment (-20). Grammatical errors will cause you to lose up to 20 points off your total score.

POSSIBLE RESEARCH PROJECT TOPICS

- 1927 Flood Greenville, MS 1963 Woolworth Sit-In Sam Cooke
- Fannie Lou Hamer Mississippi Valley State University Stax Records
- The Chicago Defender Maggie Lena Walker Robert Johnson
- Mavis Staples Dr. Laurence Jones/Piney Woods James Meredith
- Piney Woods Boarding School Alpha Kappa Alpha Sorority, Inc.
- BB King Vera Pigea Marco McMillian A'Lelia Walker Ella Baker
- Mississippi Democratic Freedom Party Isaiah T. Montgomery
- LaLee's Kin Charles McLaurin Reggie Barns The Jackson Advocate
- Rev. Wheeler Parker Jr. Parchmen Prison SNCC Freedom Summer
- Annie Devine Luther Holbert John R. Lynch Juia Hooks