

THE HISTORY, CULTURE, BLUES INSPIRED, MUSIC
CREATIVITY, ART, BEYOND

SUMMER 2016
NEH - June

Melinda Heathway
My Experience
My Response

NEH

THE MOST
SOUTHERN
PLACE ON EARTH

LUTHER BROWN - VISIONARY - DELTA

The

Mississippi

Delta

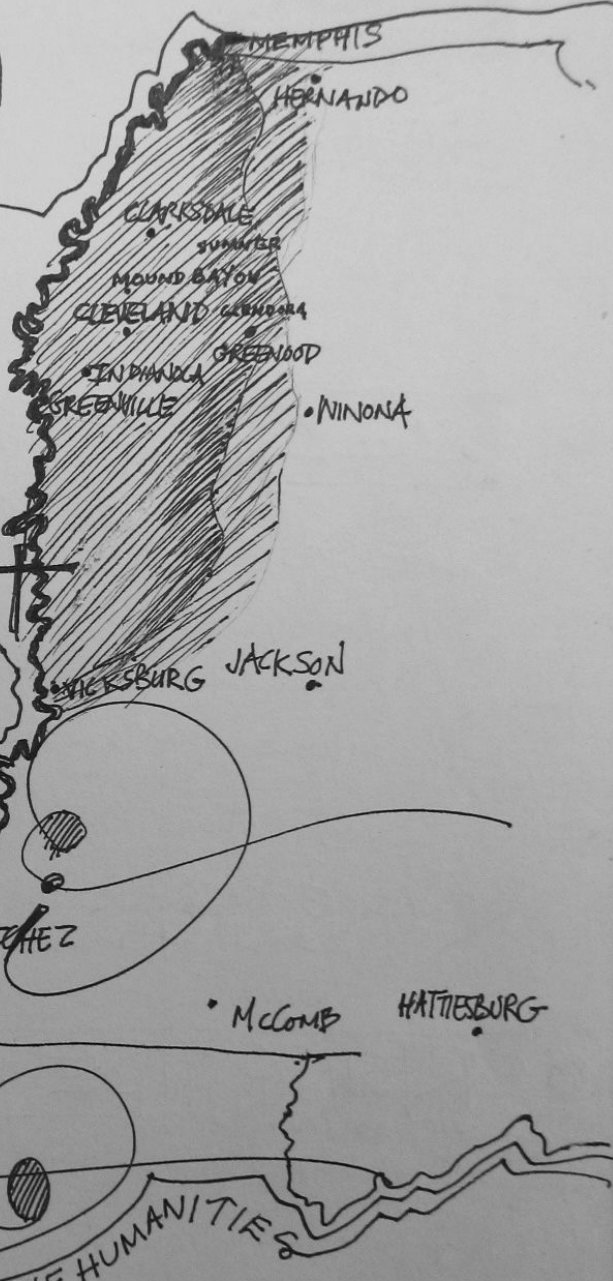
NEH - NATIONAL ENDOWMENT FOR THE HUMANITIES

Delta State University

DELTA CENTER FOR CULTURE & LEARNING

Dr. Rolando Hertz - DIRECTOR

Lee Aylward - ASSOCIATE



2016

CLEVELAND MISS.

print faster than you can think.

ON THE BUS - FIRST STOP RULEVILLE

DAY THREE

WED. JUNE 22



THE BLUES: AMERICAN ROOTS
MUSIC AND THE CULTURE THAT
PRODUCED IT

DOCKERY FARMS

THE BIRTHPLACE OF
THE BLUES

Established 1895
Ruleville, Miss.

CROSSROADS BLUES
Song by ROBERT JOHNSON

Black musicians

DUKEHOUSE: Temporarily turns into a house of entertainment

CROSSROAD BLUES

WEARY BLUES

RULEVILLE
MISSISSIPPI
HOME OF
FANNIE LOU HAMMER MEMORIAL GARDEN

Freedom Farm

LET YOUR LIGHT SHINE!

TEXT: 'THE WEARY BLUES' BY LANGSTON HUGHES

Drawn by Melinda Watkinson

Drawing by Melinda Watkinson

FANNIE LOU HAMMER MEMORIAL GARDEN

Letter of Appreciation
written by Fannie Lou
to Mrs. Smith
Jan. 24, 1968

WDIA VOICES
- Nat D. Williams
- Martha Jean "The Queen"
- Sternberg
- Rufus Thomas

Tony Smith - Senior Colleague @ Encore

GUEST SCHOLAR

DR. EDGAR SMITH

UNINSURED BLUES
Fed the town of which
Tues. was too away...
Lord, what a good...
Why...?

THIS LITTLE LIGHT OF MINE
Hammer's favorite song



JUG BAND INSTRUMENT
African prototypes
Fashioned from Amer.
materials

Hollandale, Miss.
in the Heart of
the Delta
Born 1932

Country Town
hook best to take
Town

Tin Top Roof
Segregated Situation
Old books from
White School

Fantastic Teachers
(One of the few benefits)
Books weren't written
in Afr. Amer.
i.e. - Reconstruction
was a negative

Shared Cotton experience
which lead to pursuing
an education

CAN'T CANT BUEY KING

B.B. King Museum
Indianola, Mississippi

Blues: The Music of Hope

CHITLIN CIRCUIT

E.L. Holmes
Highwater Boat

CHURCH STREET

CONTINENTAL

GIN MACHINERY

CHURCH STREET FOOD STORE

MISS U.S. 49



THE teacher "Under the
Luther Henson"
Memphis World
The Black Opener
Quit Patter
during
BB'S 103-1's

Lucille

LIVING, LOVING, LAUGHING

HOPEFULLY



THE PRAYING LORD

Club
Ebony
Buffet
Stool

Photographers
in Museum
Johnny Jones
* ch. Collection

* Ernest
Withers
Chronicle
AA LIFE

* THE HOOKS
BROS

VIA Memphis
B.B. King
* AZ Z. GAYEL
INFLUENCED
B.B. KING

SONS: "SAIL AWAY" - Randy Newman • Sunny Terry + Brownie Mc-Ghee Food: Dots, Chinese Fortune Cookies • Pork Rinds

DAY TWO: JUNE 21ST: IMMIGRANT STORIES

Dr. Charles Reagan Wilson *Must Scholar*

Religious and Cultural History of the Delta

THIS LIGHT OF MINE
MAINS STAPLES

ATOM AND EVIL
announced

REV. A. W. NIX
Matthew 7:13
Mark 4:12

Drawn by Melissa Northrup

RELIGION IS

THE BIBLE BELT

A POWERFUL FORCE

RELIGIOUS DIVERSITY

CHURCH MUSIC SIN AND SALVATION

GOODBYE BABYLON - NEGRO SPIRITUALS CD

1927-REV. A. W. NIX - "BLACK DIAMOND EXPRESS TO HELL"

Dominant in the South: Evangelicals / Fundamentalist / Moralistic
The Centrality of Religious Experience

CONVERSION (TO GAIN REDEMPTION)

PALM SPRING
INSTITUTIONAL CENTER FOR THE BLACK CHURCH

CHURCH

An Expressive Place
People of the Word

BIBLICAL GROUNDING
CHURCH FANS

FAN

POSITIVE IMAGES OF AFRICAN-AMERICANS

FANNIE LOU HAMMER

GRASSROOTS ACTIVIST
PARENTS SHARED AFRICAN TRADITIONS
SHARECROPPERS

BATEN IN WINONA MISSISSIPPI TRANSPORTATION OCCURRED IN NAIL

SNITCH Student Nonviolent Coordinating Committee
"JUST A LITTLE TALK WITH JESUS"
Birmingham, Sanfloreas County

Wear the Whole Armor of God

NEW ORLEANS DRUMMING-INFLUENCED RHYTHMS TO THE DELTA

TUES. JUNE 21ST

Juke Blues Magazine

THE 1927 FLOOD MUSEUM

Polyrhythms MISSISSIPPI



Bill Abel

THE TRUTH IS IN THE MUSIC

DEEP BLUES

ROBERT PALMER
Musical and Cultural History from the Mississippi Delta to Chicago's South Side to the World

BLUES 70

FEEL THE STORY & RHYTHMS



LIVING BLUES



LP Instruments

James Son Thomas

MON. JUNE 20 TH *WHEN THE LEVEE BREAKS* *MEMPHIS, TENNESSEE - MISSISSIPPI RIVER*

FILM ON THE BUS
FATAL FLOOD OF 1927
Paint ethereal things
like weather conditions.

Lead by Lee Aylward

THE FILM: DOCUMENTARY ON HUNGER AND POVERTY IN AMERICA
LALEE'S KIN: THE LEGACY OF COTTON

Paint ice turning to steam.
The Delta

DAY ONE THE RIVER: CREATOR AND DESTROYER OF THE DELTA

Early Development
Italian Farming (Indentured Servants)
Irish-Mule Trading
Russian Jews - Furniture, Clothing
Chinese - Grocery Stores, Railroad
Mexican - Farming

WHERE IN AMERICA?
Southern Region: The Delta
90% Swamp wilderness in 1860
1880 70% members of Merchant class
born outside of U.S.
1900 - Afr. Amer. owned 2/3 farms
by 1910 - if drastically changed
Part of the Great Afr. Amer. Migration
1870-1930



PRESENTED BY LEE
APRIL 1927
HEAVY RAIN - LEVEES BROKE - THE GREAT FLOOD

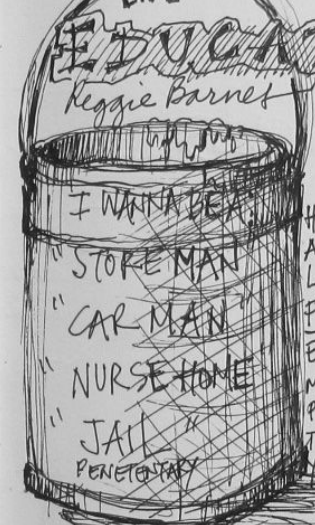
Birthplace
Father of Rock n Roll: Ike Turner
Father of the Blues: Charlie Patton
King of the Blues: B.B. King

Mounds Landing
unprotected side

The River
Mississippi
Levee

HBO
Documentary
LALEE'S KIN: THE LEGACY OF COTTON

04.2000
Oct 2001 - Released
COTTON - SLAVERY - SHARECROPPING
"BOSS MAN" "THE MASTER"
CREATED A MENTALITY IN AFR. AMERICANS:
TO WORK IN THE FIELDS. STAY ILLITERATE
CLEAN HOMES. EDUCATION UNIMPORTANT



EDUCATION SYSTEMIC PROBLEMS BEYOND UNDERSTANDING AN ACCEPTED WAY OF LIFE
Former Superintendent, West Tallahatchie County

Water
an Education
growth within that education
pride in that education

CHURCH BELIEVER
SOMEBOYS GOT TO BELIEVE THAT THINGS ARE GOING TO GET BETTER
WASH AWAY THE: NO FATHER WANTED TO EXIST
HOPES, ASPIRATIONS
SPEAKER/PRESENTER
REGGIE BARNES
THE CLASSROOM IS THE BATTLEFIELD
PASTORS MENTORING YOUTH
THINK OUTSIDE THE BOX
DEDICATION IS REQUIRED TO BE A SUCCESSFUL EDUCATOR

CLASS OF WHO WHAT WHEN WHERE HOW WE KNOW WHY

11 CHILDREN
38 GRAND CHILDREN & GREAT GRANDS

TRAPPED WITHOUT LITERACY
SELF WORTH
PRIDE



PLANTING FOR HEALTHY GROWTH & LONGEVITY
TIME PATIENCE CARE

TUESDAY - JUNE 21 - 2016 Lead by Lee Aylward

Heading to Greenville, Mississippi 8:00am

Rolando

VISIT TEMPLE

news from North
Met w/ resistance by southern Jews
Jewish Freedom Riders

Germany Later Eastern Europe
West Europe and Russia

The Delta The South's South

Delta Jewish Community

in Alan Greenwood Indianola Greenville Vicksburg Cleveland

- Sell Household goods in both worlds
- Shopkeeping
- Some Cotton Farming
- Merchandising

DAY TWO IMMIGRANT STORIES

IMMIGRANT STORIES

DELTA CHINESE FORTUNE COOKS PORK RINDS FOOD OF THE DAY

Landau Kossman Livingston
Namer Orlansky Stein Himmelstein Lipnick Bloom Kline Schwartzman

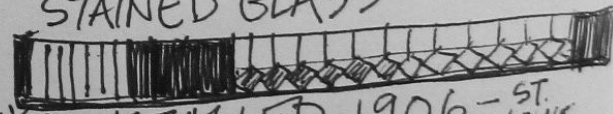


REX THEATRE
FOR COLORED PEOPLE
JEWS UNDERSTOOD THE
PLIGHT OF THE OPPRESSION
OF BLACK PEOPLE BUT
HAD NO CIVIL RIGHTS
ORGANIZATIONS SUPPORTING
ISSUES LIKE INTEGRATION



OPERATE CLOTHING BUSINESS

STAINED GLASS



HEBREW UNION CONGREGATION ST. LOUIS, MO. MADE

Outside Jews came to Miss to support the Civil Rights movement

TE
ISM
TAUGHT &
OURAGED
ERATIONALLY
JEWISH SURVIVAL
UNITY AND
BLACK

JEWISH
MIGRATION
AFTER WWII

A drawing of a menorah, a traditional Jewish candelabrum with seven branches.



REFORM JUDAISM (MODERN)

TUESDAY - JUNE 21 - 2016 *Lead by Lee Aylward*

Heading to Greenville, Mississippi 8:00am

JEWISH TEMPLE **"The Delta The South's South"**

Jews from North
Met w/ resistance by South
Jewish Freedom Riders
Germany later Eastern Europe
West Europe and Russia

Delta Jewish Community

Glou Alan · Greenwood · Indianola · Greenville · Vicksburg · Cleveland

- Sold Household goods in both worlds
- Shopkeeping
- Some Cotton Farming
- Merchandising

TUES 6/21 **DAY TWO IMMIGRANT STORIES**

Family Names: Orlansky, Stein, Himmelstein, Lipnick, Bloom, Kline, Schwartzman

REX THEATRE FOR COLORED PEOPLE

Jews understood the plight of the oppression of black people but had no civil rights organizations supporting issues like integration

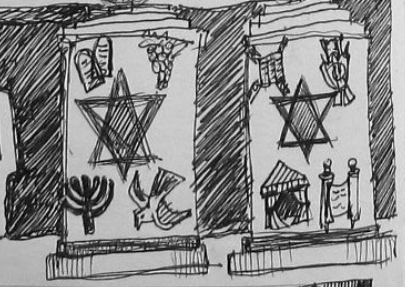


OPERATED CLOTHING BUSINESS
STAINED GLASS
HEBREW UNION CONGREGATION
INSTALLED 1906 - ST. LOUIS MADE

WHITE RACISM WAS TAUGHT ENCOURAGED GENERATIONALLY

Outside Jews came to Miss to support the Civil Rights movement

JEWISH MIGRATION AFTER WWII

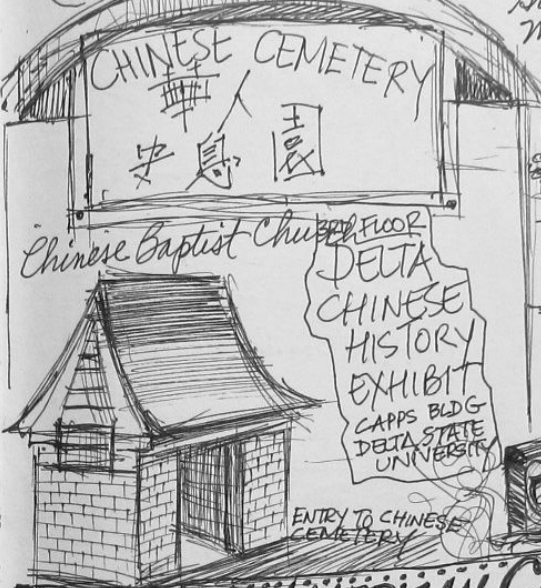


REFORM JUDAISM (MODERN)
GRAMMY MUSEUM · MISSISSIPPI · DELTA CHINESE HISTORY EXHIBIT 3RD FLOOR · DSU CAMPUS

DAY TWO 6/21/16

Chinese in the Delta

Greenville Mississippi



CHINESE BAPTIST CHURCH
DELTA CHINESE HISTORY EXHIBIT
CAPPS BLDG DELTA STATE UNIVERSITY
ENTRY TO CHINESE CEMETERY

AFRICAN-AMERICAN CEMETERY



Live Oak Cemetery

Sketch by Lee Aylward

ON THE BUS - FIRST STOP RULEVILLE

DAY THREE

WED. JUNE 22

THE BLUES: AMERICAN ROOTS
MUSIC AND THE CULTURE THAT
PRODUCED IT

DOCKERY FARM

THE BIRTHPLACE OF
THE BLUES

Established 1895
Ruleville, Miss.



The Blues

Black Musicians

KEHOUSE: Temporarily turns into a house of entertainment

CROSSROAD BLUES

WEARY BLUES

Ruleville
Mississippi

Freedom Farm

Memorial Garden

LET YOUR LIGHT SHINE!



TEXT: "THE WEARY BLUES" BY LANGSTON HUGHES

Drawn by Melinda Kathan

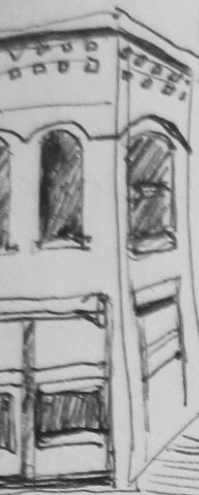
BAYOU BUILDING

Mound Bayou Blues

"Sweet Land of Liberty" Thomas Sugrue

DAY FOUR June 22

To Monkey Road



Denise La Salle "I'm a Juke Joint Woman"

"Jook" (African-American Culture) "Wicked" - Be Free - Be Creative House

African Word

"The juke joint is callin' me tonight. I'm addicted to the party life"

Drawn by Melinda Matheny

To Monkeys - Real Authentic Rural Jook Joint

"The Great American Highway" Highway 61

EELER ON BUS WITH US
RKER

OF EMMETT TILL
EMMETT THAT DAY



GUEST SPEAKERS

Charles McLaurin

NOT SOLDIER FOR FREEDOM
Rights Movement -
ting a lot of tradition
ountered Racial
Martin L. King
egar Evers

Born in Jackson Miss
went to Jackson, College

Grandmother went to Tuskegee Univ.
"High yella"

Civil Rights Advocate

FREEDOM RIDERS

THE FREEDOM HOUSE

1960's

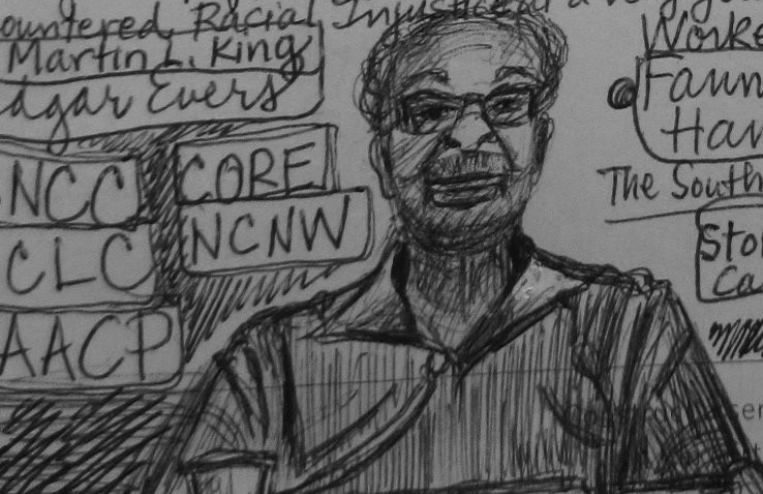
NCC CORE
CLC NCNW
AACP

Worked with Fannie Lou Hamer

The South was Dixiecrats

Stokely Carmichael

CHUCK CLOSE



series of self-imposed limitations that make you function
tain ways and keep you from functioning in other movement
THE BASE OF THE MOVEMENT

LECTURE ON EDDIE JAMES

Spanish Tone MA RANEY SEE SEE RIDER

LECTURE ROBERT JOHNSON

June 21st GUEST SCHOLAR DR. DAVID EVANS

"SON" HOUSE Influenced musicians Robert Johnson Muddy Waters



DAY 3 CHARLIE PATTON played Slide Style with a Jack Knife or Bottle Neck

"BABY YOU DON'T HAVE TO GO" JIMMY REED GUITAR HARMONICA 1954 FIRST BIG HIT

LECTURE ON CHARLIE PATTON

crackers and ketchup Joe's Hot Tamales DAY 3 FOOD Delta Tamales

40'S & 50'S MIGRATION HITS

"ingonna buy me a brand new"

DELTA CHICAGO -> ST. LOUIS -> DETROIT -> MEMPHIS - THE ILLINOIS CENTRAL

DeltaCenter.DSU.com JACK S@DeltaState.edu

DELTA BLUES MUSEUM THEO ROCK N SOUL MUSEUM WED. EVENING JUNE 21ST GROUND ZERO BLUES CLUB Clarksdale, Mississippi

JOSH "RAZORBLADE" STEWART CLARKSDALE, MS BILL LUCKETT - MAYOR

DAY FOUR THURSDAY JUNE 22

THE STORY OF EMMETT TILL

FOOD: Koolidles

SONG: The Death of Emmett Till by Bob Dylan

BUS TO: Marigold Highway 61-3 (Bedroom community for Cleveland) German P.O.W. Camp exiated German U Boat Prisoners U.S. Negro Town

Highway 61-2 Highway 61-3 MDAH Mississippi Department of Archives and History Pottery: Signatura Colors: Nutmeg Woods Bros. Mound Bayou called Peter's Pottery?

Mound Bayou - Oldest Incorporated Afr. Amer. Town

current mayor MAYOR JOHNSON Pres. Roosevelt Booker T. Washington

A Well Kept Secret of the African American Experience in America Settled by ex-slaves Laborian Hospital

MOUND BAYOU BANK BUILDING



Mound Bayou Blues

DAY FOUR June 22

Sweet Land of Liberty Inmy Sugar

To Monkey Road

Denise LaSalle "I'm a Juke Joint Woman"

"Jook" (African-American Culture) House

African Word "The Juke Joint is Callin' me tonight. I'm addicted to the party life"

To Monkeys - Real Authentic Jook Joint

The Great American Highway as Highway 61

WHEELER PARKER ON BUS WITH US

COUSIN OF EMMETT TILL WITH EMMETT THAT DAY



GUEST SPEAKERS Charles McLaurin - FOOT SOLDIER FOR FREEDOM GREENWOOD

Born in Jackson Miss went to Jackson, College Grandmother went to Tuskegee Univ. "pega yella"

Civil Rights Advocate FREEDOM RIDERS THE FREEDOM HOUSE 1960S

SNCC CORE SCLC NCNW NAACP



Worked with Fannie Lou Hamer

The South was Dixicrats

Stokely Carmichael GREENWOOD WAS THE BASE OF THE MOVEMENT IN THE DELTA

JUNE 24TH DAYS
 Draw and write to capture the moment

The Civil Rights Movement
 Visiting Exhibition on:
Art as Social Commentary

MEMPHIS TENNESSEE
 BUS# 2265

MLK, GANDHI
 LINCOLN, ALI
 OBAMA, ROBINSON
 BILLIE J. KING
 PASTORS KENNETH

Painted
 Wooden
 Hinged Box
 that tells a
 story

WALL TEXT
 INSPIRING
 GREATNESS
 THROUGH WORDS
 AND DEEDS:
 THE ARTWORK
 OF BARET BOISSON

Artist: Barett Boisson
 acrylic, glitter on canvas
 THE BLACK ARTS MOVEMENT BAM BAR
 Fashmal Reed, Jayne Cortez, Leon Damas
 Romare Bearden, Nikki Giovanni, Evelyn Spector

SOLD ART EXHIBITION

BUS STOP
 STOP JIM CROW CAN

NATIONAL CIVIL RIGHTS MUSEUM at the LORRAINE MOTEL

Songs: "Marian Anderson", "What's Goin' On"
 The Freedom Singers
 "Handkerchief Love"
 Frank Cicciorka, Edmonia Lewis, Paul Robeson, Richard Wright, Richard D. "BLACK BOY" about the DIASPORA
 Gwendolyn Brooks, "Black Belt"
 Archibald Motley (Lumiere of Miss.)
 James Meredith

ART AND ENTERTAINMENT
 Creative Expression
 HUMILIATING TRAVEL
 TRAVELING WITH DIGNITY
 Love Changin' Blues
 Blind Willie McTeel
 Memphis Minnie
 1949

FIRST BLACK DOLLS - MARCUS GARIBAY
 (Drew a series of demonstrations drawings)

Artist: Burton Silverman
 "Church Meeting" 1956
 AN AMAZING ACCOMPLISHMENT

THE GREEN BOOK 1956
 END SEGREGATED SCHOOLS
 WE DEMAND LUNCH COUNTER STOOL

Coalition for Human Rights
 CHIRLA
 Raising America

MONTGOMERY BUS BOYCOTT
 ONE YEAR AND 15 DAYS
 DAY 1 DEC. 5

DAY 383 DEC. 21
 REGISTER TO VOTE
 Drawings by Melinda

ROOM 306

DR. MARTIN LUTHER KING, JR.
 ROSA PARKS
 Segregation of Montgomery, Alabama

Weatherby on site



Muddy as an Urban Griot
 (The African Influence)
 "Mannish Boy" 1955
MOJO!

The Dollmaker
FINAL DAY SAT. JUNE 25TH
 Drawing on site

DAY 6
 SONG: "SWEET HOME CHICAGO" ROBERT JOHNSON
 FOOD: FRIED CHICKEN AND POUND CAKE



CHICAGO BLACK RENAISSANCE
 Jazz, Blues, Gospel
 THE DELTA IN DIASPORA
 BY JOAN STRAIT
 1963
 THE TIME HAD COME
 "I Be's Trowed / Can't be Satisfied" WHY CHICAGO?
 LEAVING THE DELTA
 THE RIVER, THE RAILROAD
 THE SOUTHERN DIASPORA
 THE GREAT MIGRATION
 NAACP CORE
 Pullman Porters

DIASPORA
 African American
 The Jewish Diaspora
 The Chinese Diaspora
 Lillian Hellman - Playwright
 Bobby Jo Moon - Writers
 Willie Morris - Writer
 Muddy Waters - Musician

Architects of Change
 Chicago Psychological Freedom
 Equal Opportunities
Bronzeville
 Chicago's
 Joseph P. Kamp
 The Regal Theatre
 Chicago Southside Chicago Black Press
 Lived in Chicago as a boy
 Chicago Renaissance
 Archibald Motley New Orleans
 during Harlem Renaissance Chicago Art Institute - Painted about