

Written & Illustrated by The Light House Arts & Heritage Program 2004



Heroes of the Mississippi Delta

Coloring Book

The Lighthouse Arts & Heritage Program is an educational enrichment initiative, established by the Delta Center for Culture & Learning at Delta State University, that uses the cultural heritage of the Mississippi Delta and the arts to engage middle school children in the Cleveland (MS) School District. Funded by a grant from Learn & Serve America, the program combines cultural workshops, arts instruction, and civic engagement to foster community pride among the children and students from Delta State and to develop a deeper understanding of Delta culture and its significance to the rest of the world.

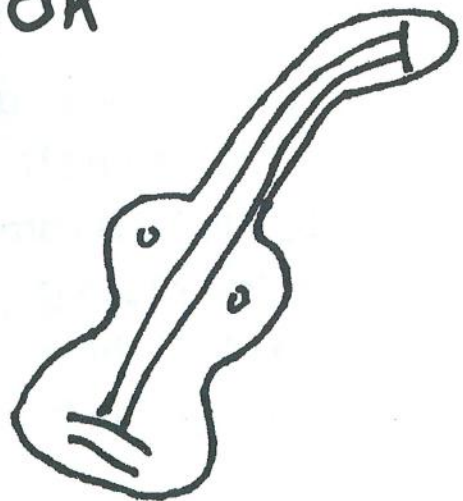
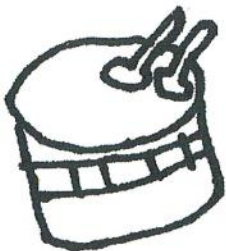
This coloring book was produced by the student participants in the 2003-2004 Lighthouse Program to help younger students learn about their own cultural heritage.

Page by page, the following Lighthouse students created this coloring book: Mark Young, Cathy Hickman, Desmond Hope, Domanique Ramiz, Xavier Green, Willie Murray Jr., and Willie Norman.

This project was made possible through the financial support of the Cleveland Youth Council's Youth Innovation Fund and Communities in Schools of Leflore County. The Cleveland Youth Council is a group of teen leaders who are working to give Cleveland, Mississippi, youth a voice in community affairs. The Council is funded by a grant from the W. K. Kellogg Foundation Youth Innovation Fund. Communities in Schools of Leflore County is a non-profit agency with the mission of connecting needed community resources with schools and neighborhoods to help young people successfully learn, stay in school, and prepare for life.

Heroes of the Mississippi Delta

Coloring Book

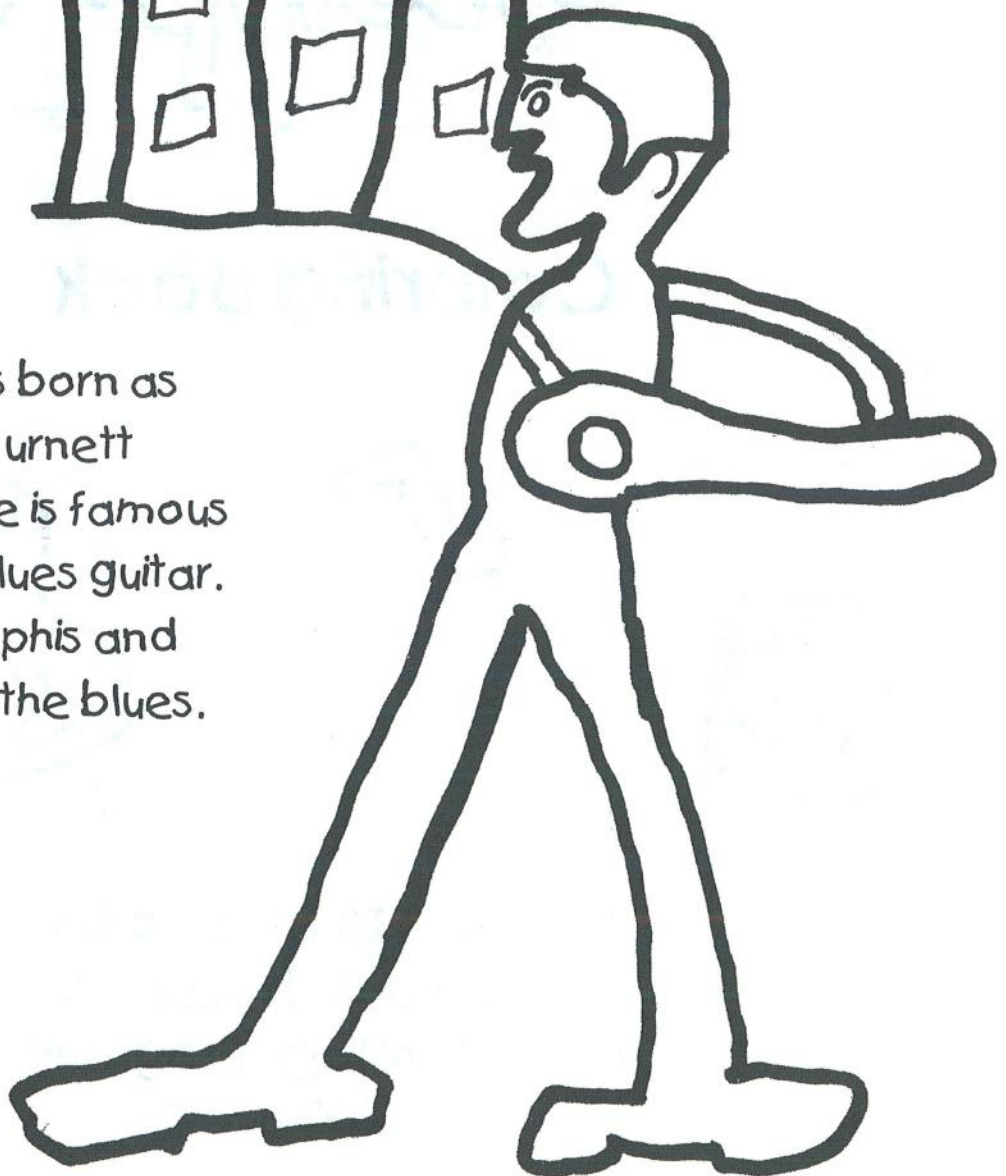


Written & Illustrated by
The Light House
Arts & Heritage Program
2004

HOWLIN' WOLF

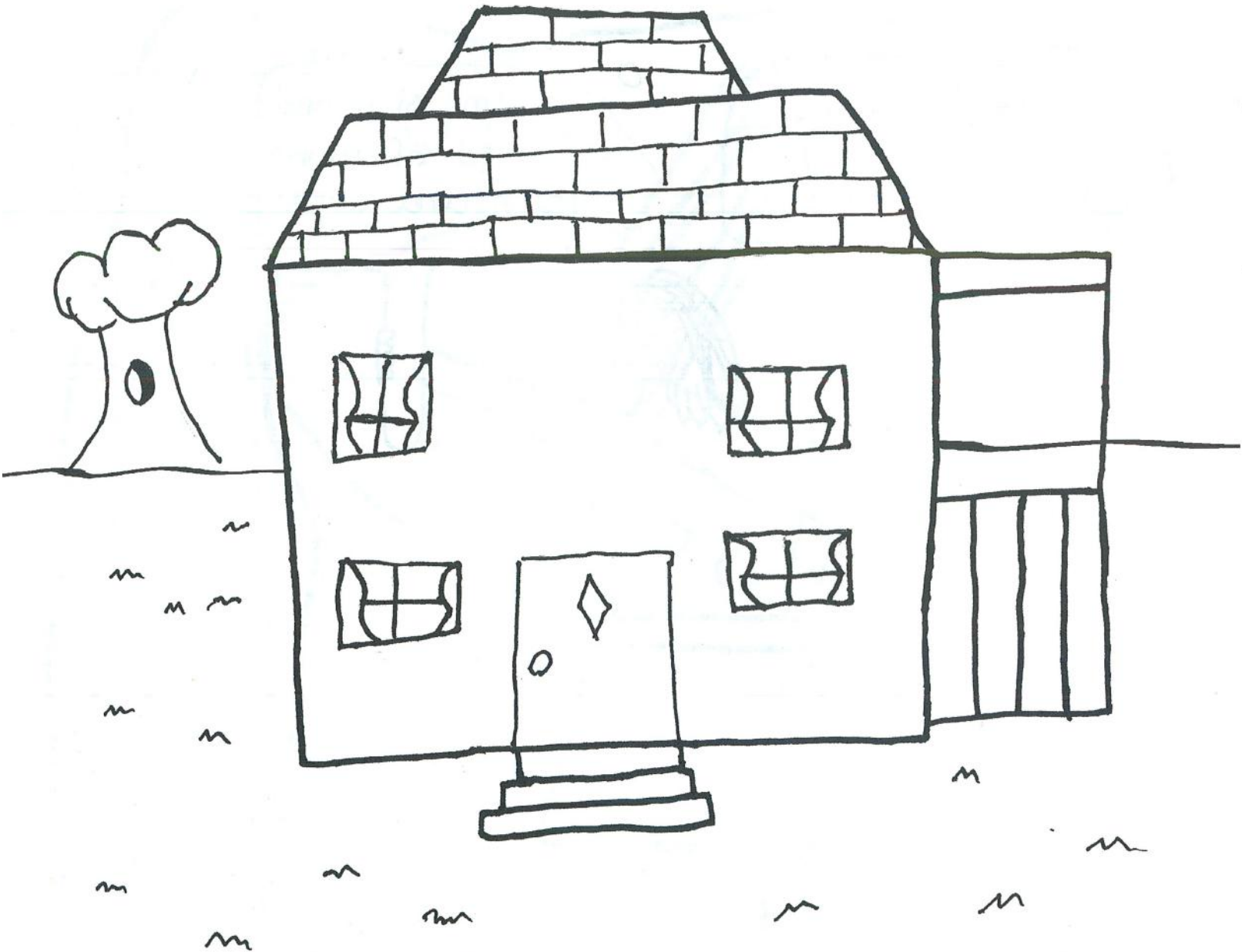


Howlin' Wolf was born as Chester Arthur Burnett on June 10, 1911. He is famous for playing the blues guitar. He went to Memphis and Chicago to play the blues.





I.T. Montgomery



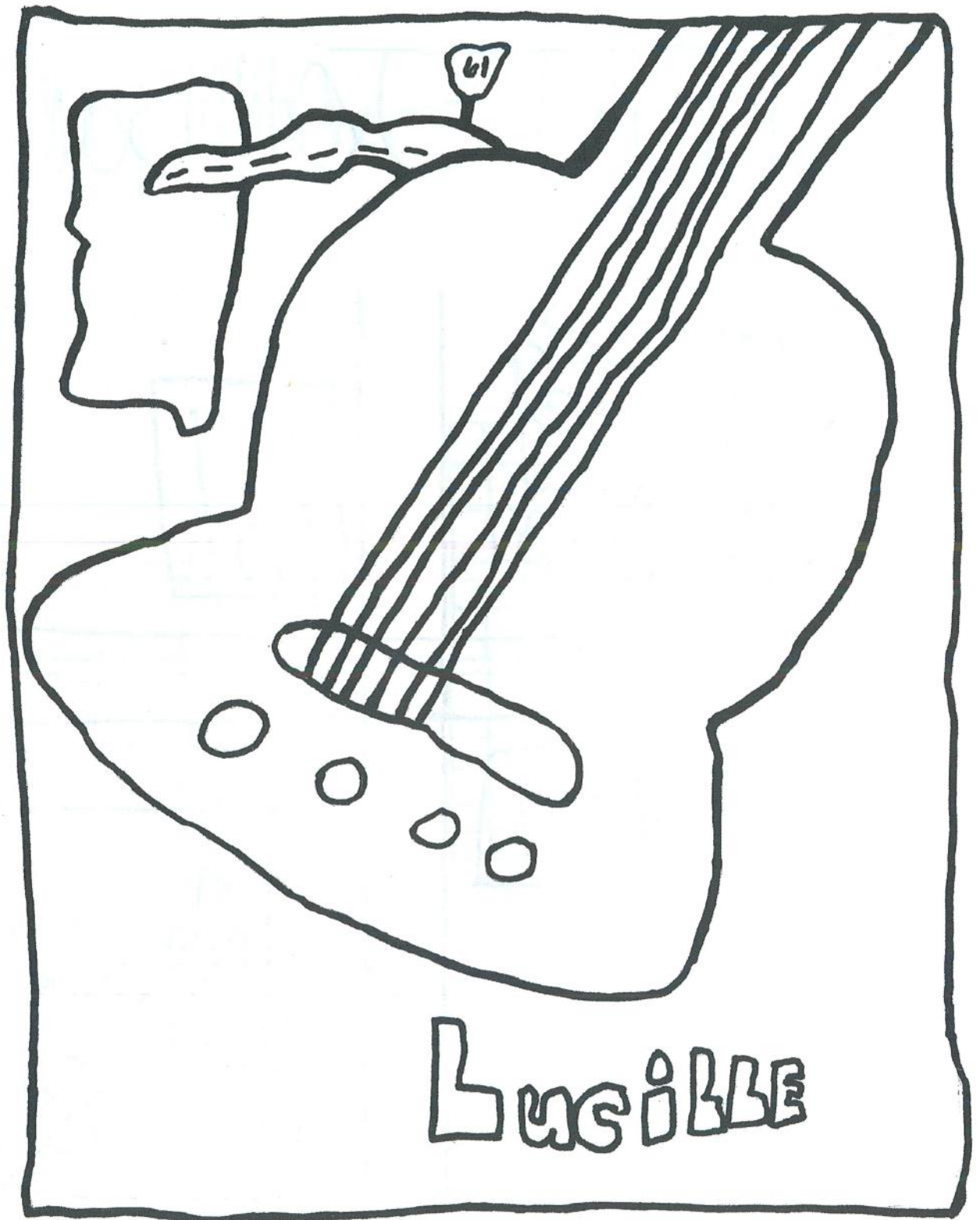
I.T. Montgomery was an ex-slave. He wanted to create the best place for former slaves so he bought land and founded Mound Bayou.

Fannie Lou Hamer



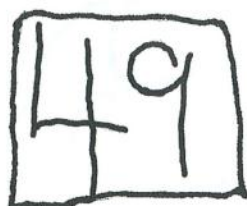
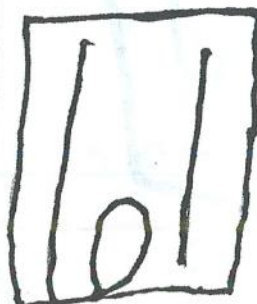
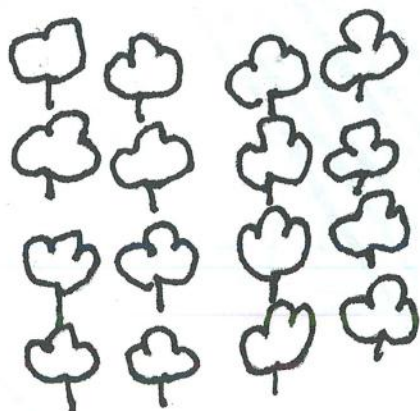
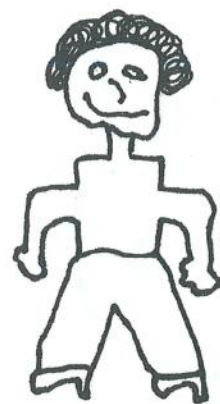
Fannie Lou Hamer was an African American woman from Ruleville, Mississippi who played an important role in the Civil Rights Movement.

B
B
K
i
n
g



Riley "B.B." King was born in Indianola, Mississippi. B.B. King is a famous blues singer with a guitar named Lucille.

ROBERT JOHNSON



Robert Johnson was a blues musician. He was born in Hazlehurst, Mississippi on May 8, 1911. Whiskey and poison sent Robert Johnson to his grave. This is the crossroads where Robert Johnson sold his soul to the devil.

Muddy Waters



Muddy Waters is on his way to Chicago from Clarksdale, Mississippi. He was the first person to amplify blues.

Emmett Till



Emmett Till was a young black boy. He was brutally killed for whistling at a white woman. He was a symbol for how some black people were treated in the south during the 1950s.



The world is a better place because of the
Heroes of the Mississippi Delta.

The End

The Delta Center
for Culture & Learning

Delta State University
Dr. Luther Brown, Director
Box 3152 Cleveland, MS 38733
phone: 662-846-4312
lbrown@deltastate.edu
www.blueshighway.org

The Delta Center for Culture and Learning is an interdisciplinary program within Delta State University. Its mission is to promote the broad understanding of the history and culture of the Mississippi Delta and its significance to the rest of the world. Its activities include classes, field trips and tours, oral history projects, historic preservation efforts, and service learning and community outreach programs.